

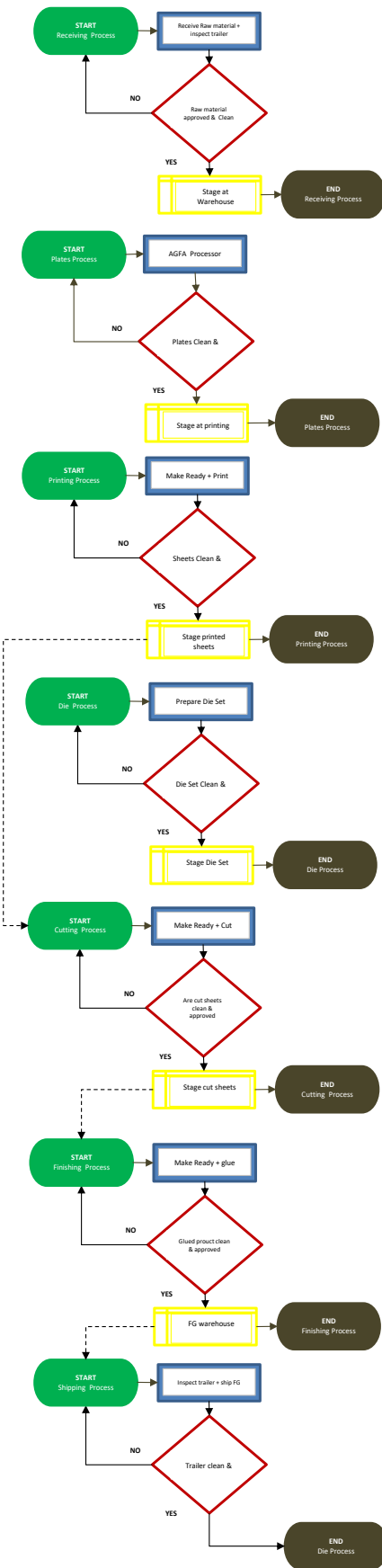


6. S FOOD SAFETY/HACCP PLAN

LAST UPDATE: 03/28/2024

LAST VERIFICATION: 03/13/2025

RISK RATING SCALE		
SEVERITY	LIKELIHOOD	ACTIONS REQUIRED IF:
1 = No potential harm or significant effects	1 = Very unlikely	Severity = 5
3 = Negative effect/ Potential customer complaint	3 = Quite possible	Likelihood = 5
5 = End user getting sick	5 = Very likely	RPN > 8



PROCESS	ACTIVITY	FOOD SAFETY HAZARD	SEVERITY	LIKELIHOOD	RPN	GMP (Good Manufacturing Practices)	CP/CCP	PPE	MATERIALS	SDS	SUPPLIER	
RECEIVING	<ul style="list-style-type: none"> - Receive raw material - Inspect Trailer - Stage material in warehouse 	Biological										
		Personal hygiene	1	3	3	- Use a sanitiser to clean hands						
		A cut (blood exposure)	5	1	5	- Use colored band aid/ Clean contact area	CP			- Board, Pallets, Inks, Film, Plates, Corrugated		
		Sick employee	5	1	5	- Use face mask/ send home	CP			- Coating, lubricants, cleaning solutions		
		Chemical										
		Contaminated Trailer	5	1	5	- Reject load	CP	- Steel toe shoes		- Board, Pallets, Inks, Film, Plates, Corrugated		Various
PRE PRESS	<ul style="list-style-type: none"> - Plate processing - Preventive Maintenance - Fountain cleaning - Machine exterior cleanup 	Biological										
		Personal hygiene	1	3	3	- Use a sanitiser to clean hands/ Staff Training						
		A cut (blood exposure)	3	1	3	- Use colored band aid/ Clean contact area	CP					
		Sick employee	1	1	1	- Use face mask/ send home	CP					
		Chemical										
		Chemical solutions for plates	1	1	1	- Keep Chemical solutions closed and properly identified	CP			- Plate processing solutions	Yes	ECO3 (AGFA)
PRINTING	<ul style="list-style-type: none"> - Feed board - Print - Remove printed load - Preventive Maintenance - Rollers cleaning - Fountain cleaning - Machine exterior cleanup 	Biological										
		Personal hygiene	1	3	3	- Use a sanitiser to clean hands						
		A cut (blood exposure)	3	1	3	- Use colored band aid/ Clean contact area	CP					
		Sick employee	1	1	1	- Use face mask/ send home	CP					
		Chemical										
		Chemical Solutions	3	1	3	- Keep Chemical solutions closed and properly identified	CP	- Plastic Gloves		- Oils & grease	Yes	Sun Chemical
DIE SHOP	<ul style="list-style-type: none"> - Wood dies manufacturing by CNC - Wood dies knifing - Preventive Maintenance - Machine exterior cleanup 	Biological										
		Personal hygiene	1	3	3	- Use a sanitiser to clean hands						
		A cut (blood exposure)	1	3	3	- Use colored band aid/ Clean contact area	CP					
		Sick employee	1	1	1	- Use face mask/ send home	CP					
		Chemical										
		Oil or grease	3	1	3	- Spray red and scrap material	CP	- Saftey glasses		- Coatings & Inks		
CUTTING	<ul style="list-style-type: none"> - Feed board - Cut/ shape board - Preventive Maintenance - Machine exterior cleanup 	Biological										
		Personal hygiene	1	3	3	- Use a sanitiser to clean hands						
		A cut (blood exposure)	1	3	3	- Use colored band aid/ Clean contact area	CP					
		Sick employee	1	1	1	- Use face mask/ send home	CP					
		Chemical										
		Oil or grease	3	1	3	- Identify, segregate and scrap material	CP					
FINISHING	<ul style="list-style-type: none"> - Feed cut pieces - Fold and glue - Weight and flat pack - Preventive Maintenance - Machine exterior cleanup 	Biological										
		Personal hygiene	1	3	3	- Use a sanitiser to clean hands						
		A cut (blood exposure)	1	3	3	- Use colored band aid/ Clean contact area	CP					
		Sick employee	1	3	3	- Use face mask/ send home	CP					
		Chemical										
		Glue	3	1	3	- Identify, segregate and scrap material	CP			- Glue	Yes	Specialty Adhesives / Diamondback
SHIPPING	<ul style="list-style-type: none"> - Wrap Finished Goods skids - Damage boxes - Truck 	Biological										
		Personal hygiene	1	3	3	- Use a sanitiser to clean hands						
		A cut (blood exposure)	1	1	1	- Use colored band aid/ Clean contact area	CP					
		Sick employee	1	3	3	- Use face mask/ send home	CP					
		Chemical										
		Physical										